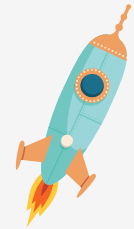




WOW! SPONSORSHIP

Select Your Sponsorship Level at
ExploreTheWoW.com



EXPERT	MASTER	JOURNEYMAN	APPRENTICE
--------	--------	------------	------------

\$5,000 * **	\$1,000 **	\$500 **	\$250
--------------	------------	----------	-------

CINCH SACK SPONSOR Company logo printed on student cinch sacks			
--	--	--	--

WELCOME SIGNAGE Company logo printed on signage at Expo entrance	WELCOME SIGNAGE Company logo printed on signage at Expo entrance		
--	--	--	--

STUDENT BOOKLET Company logo included on sponsor page of student booklet	STUDENT BOOKLET Company logo included on sponsor page of student booklet	STUDENT BOOKLET Company logo included on sponsor page of student booklet	
--	--	--	--

PRESS RELEASE Company logo included in WoW! press release	PRESS RELEASE Company logo included in WoW! press release	PRESS RELEASE Company logo included in WoW! press release	PRESS RELEASE Company logo included in WoW! press release
---	---	---	---

WOW WEBSITE Company logo on ExploretheWoW.com homepage AND sponsor page	WOW WEBSITE Company logo on ExploretheWoW.com homepage AND sponsor page	WOW WEBSITE Company logo on ExploretheWoW.com sponsor page	WOW WEBSITE Company logo on ExploretheWoW.com sponsor page
---	---	--	--

SOCIAL MEDIA Company name included in sponsor post on Facebook	SOCIAL MEDIA Company name included in sponsor post on Facebook	SOCIAL MEDIA Company name included in sponsor post on Facebook	SOCIAL MEDIA Company name included in sponsor post on Facebook
--	--	--	--

* First right of acceptance the following year ** Registration must be received by August 30, 2024, to guarantee inclusion in print pieces



VIRGINIA

- Clarke County
- Frederick County
- Page County
- Rappahannock County
- Shenandoah County
- Warren County
- Winchester

1 **3,000** STUDENTS
DAYS **7** SCHOOL DIVISIONS
50+ VOLUNTEERS
80+ BUSINESSES

2024 EVENT

OCTOBER 11

James R. Wilkins, Jr.
 Athletics & Events Center
 1188 Ralph Shockey Dr.
 Winchester, VA 22602

EMBARKING ON A CAREER JOURNEY

In Virginia, students begin crafting their career journey in middle school — exposure to careers and the shaping of their interests affect the courses they choose in high school and beyond.

Worlds of Work provides an immersive career exploration experience where students move through industry sectors (Work Worlds) engaging in brief, hands-on activities.

8th

GRADE

10

WORK
WORLDS

Agriculture → Communications → Finance →
 Hospitality → Construction → Health Science →
 Information Technology → Manufacturing →
 Public Service → Transportation & Logistics

SPONSORSHIP ALLOWS WOW! TO

- Provide the WoW! experience to public school students free of charge
- Rent the event site
- Purchase 3,000 cinch sacks with the WoW! logo
- Produce a digital career guide booklet that includes needed skills & education and potential earnings
- Provide beverages, lunches, and snacks for exhibitors and volunteers on event day

WHAT PEOPLE ARE SAYING

96% of Exhibitors are satisfied & would recommend participation to other businesses!

86% of Students felt WoW! gave them career ideas - 93% felt the experience was good/great!

97% of Educators said WoW! is a beneficial experience for their students!



ABOUT WOW!

Worlds of Work is a career exploration event managed by Laurel Ridge Community College Career Pathways Consortium, in partnership with Clarke County Economic Development, Frederick County Economic Development Authority, Northern Shenandoah Valley Regional Commission, Page County Economic Development, Shenandoah County Economic Development, and Winchester Economic Development Authority.

2017 Recipient Virginia Governor's Awards for Excellence and Innovation in Education

Est. 2015

ExploretheWoW.com